



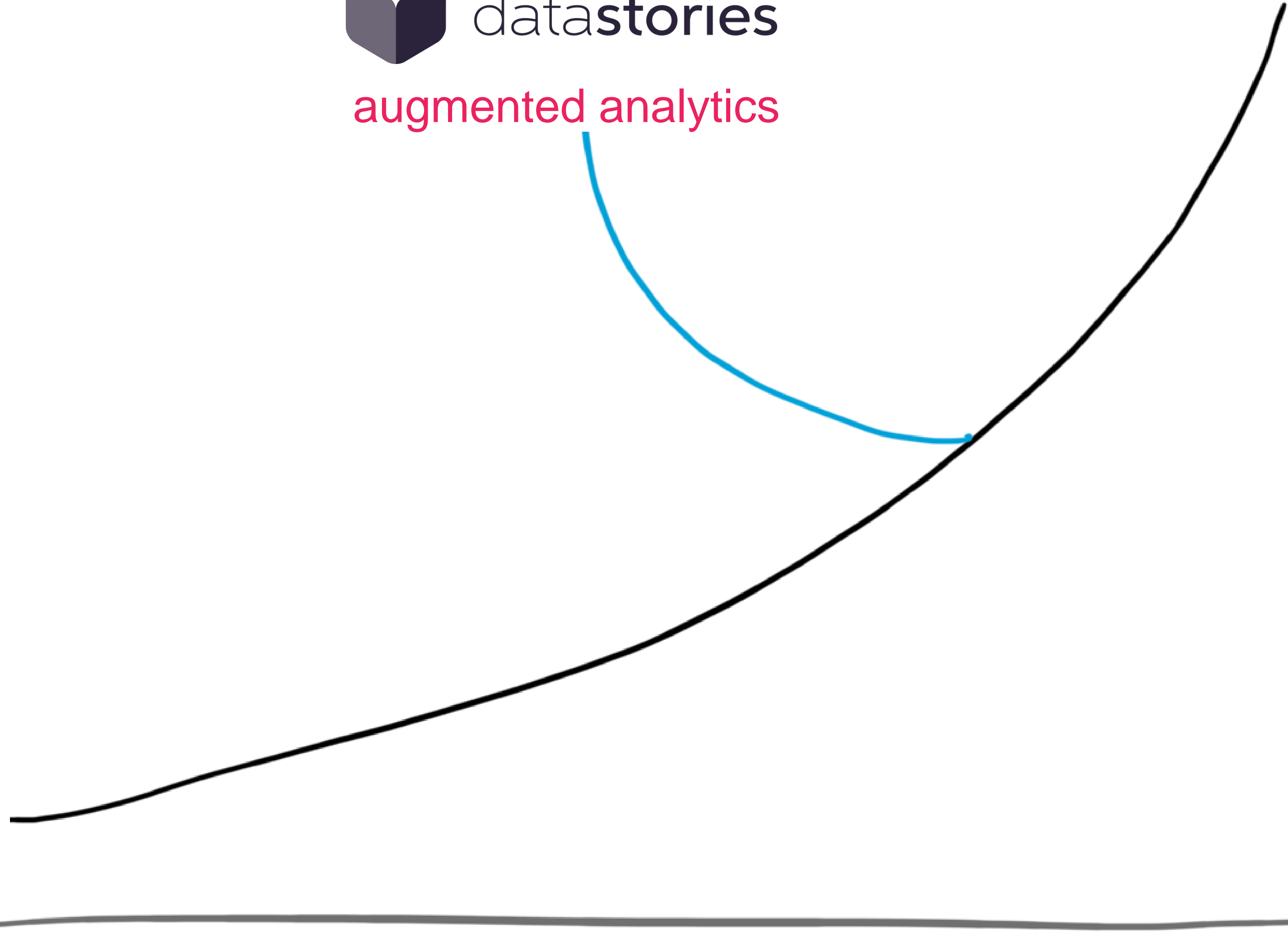
data**stories**

AUGMENTED ANALYTICS

First simple-to-use AI innovating compounds, mixtures and processes

analytical maturity

 data**stories**
augmented analytics



needed analytical expertise

SHAPED BY LEADERS

		#1 in semiconductor machinery	
			
			
			



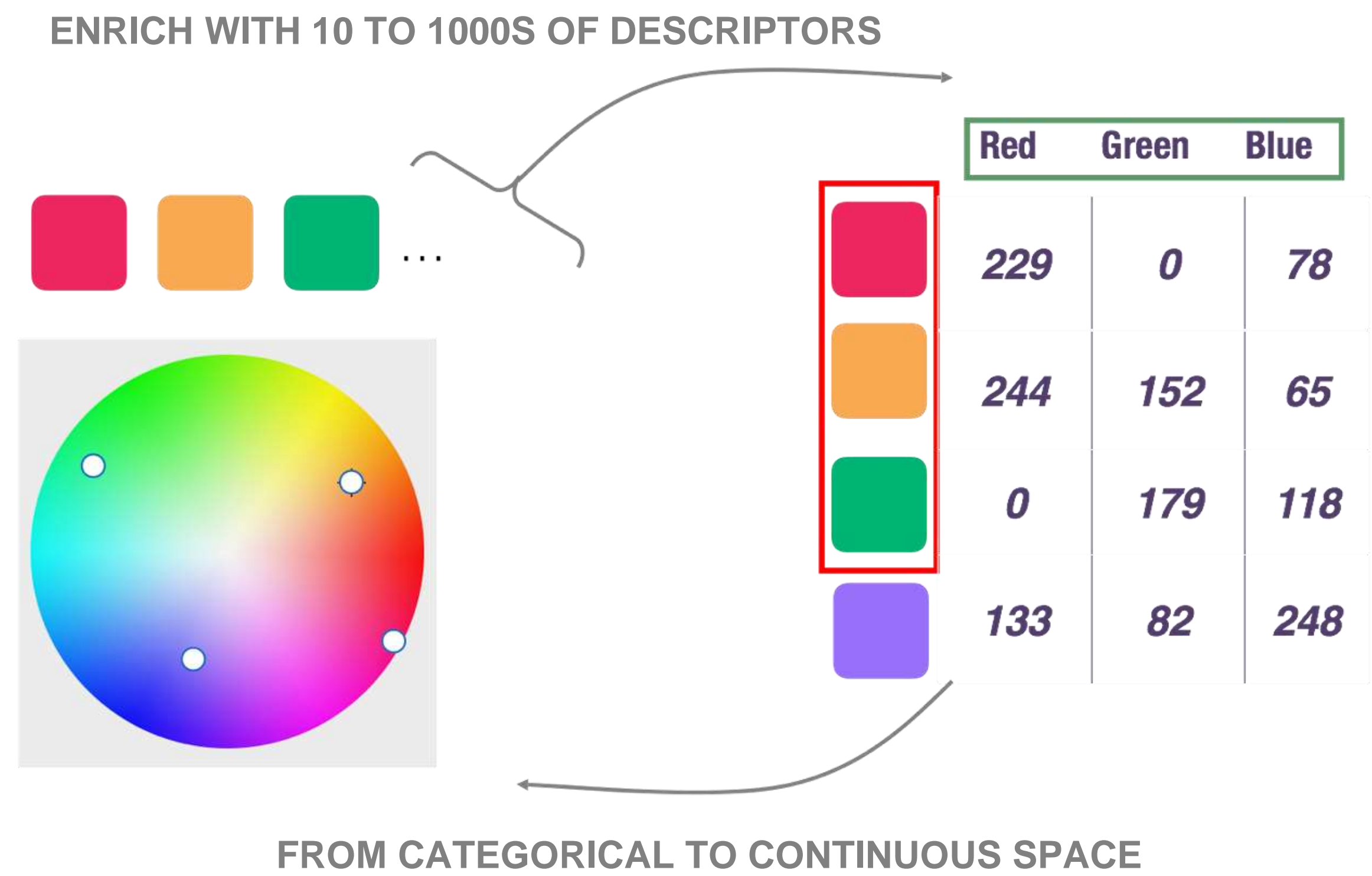
now available for anyone



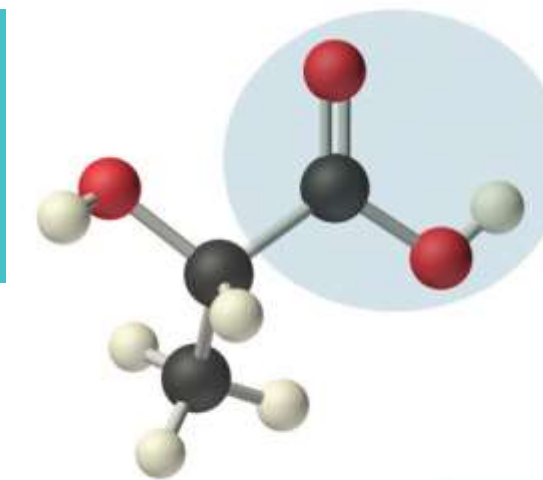
COMPOUND DESIGN

HOW TO FIGHT THE COMBINATORIAL EXPLOSION?

MAKE PREDICTIONS
FOR UNKNOWN
COMPOUNDS,
PRODUCTS,
SERVICES, ...

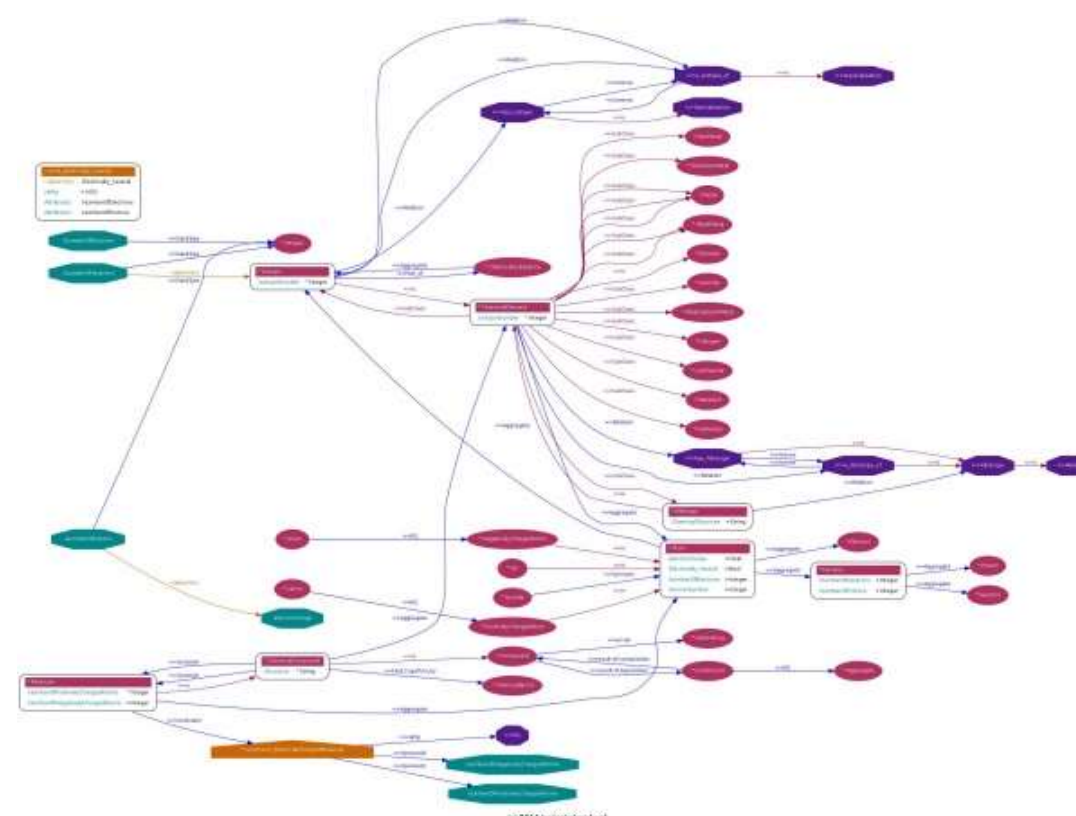


DATASTORIES loves thousands of variables

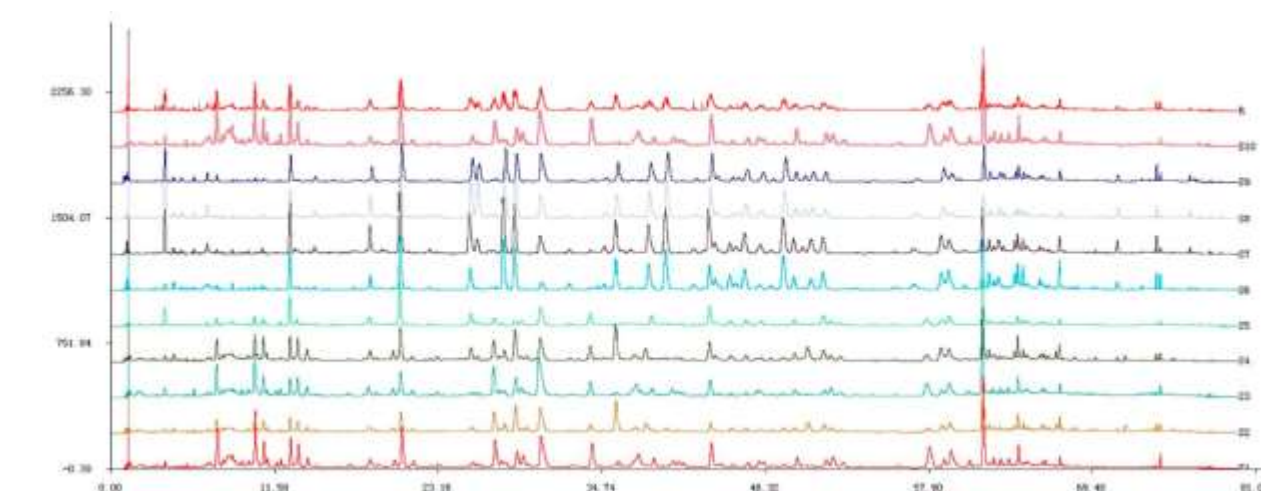
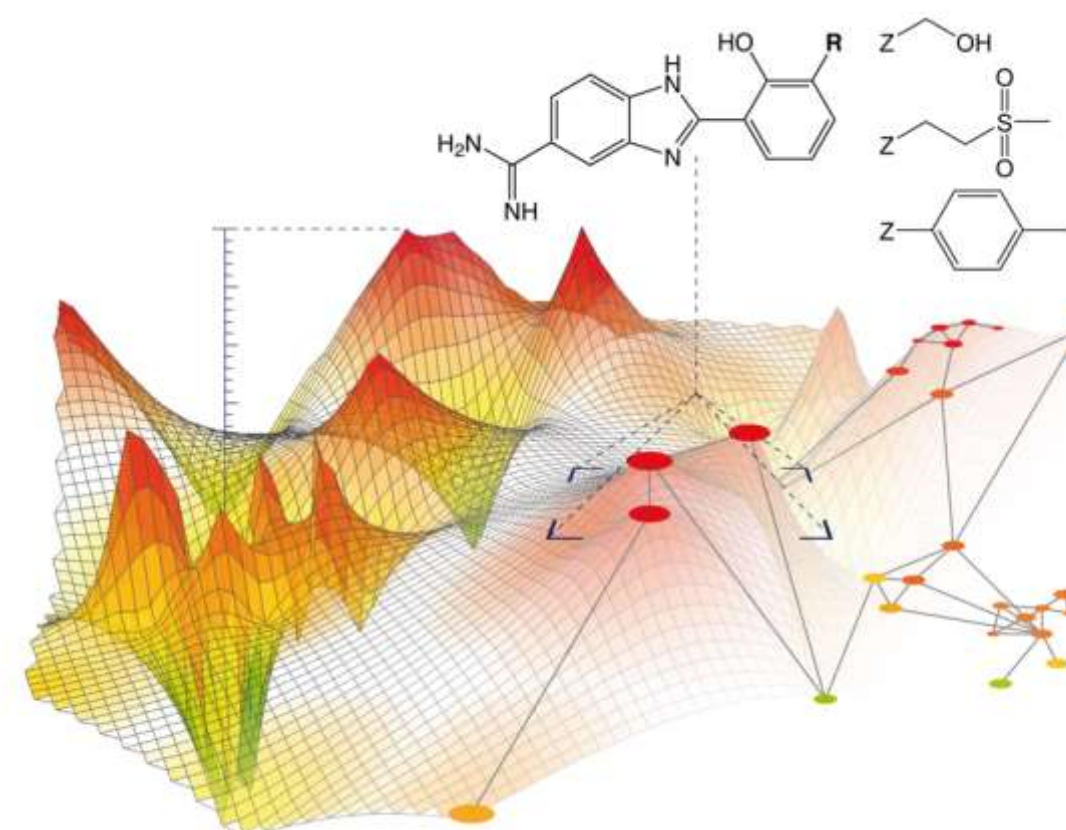
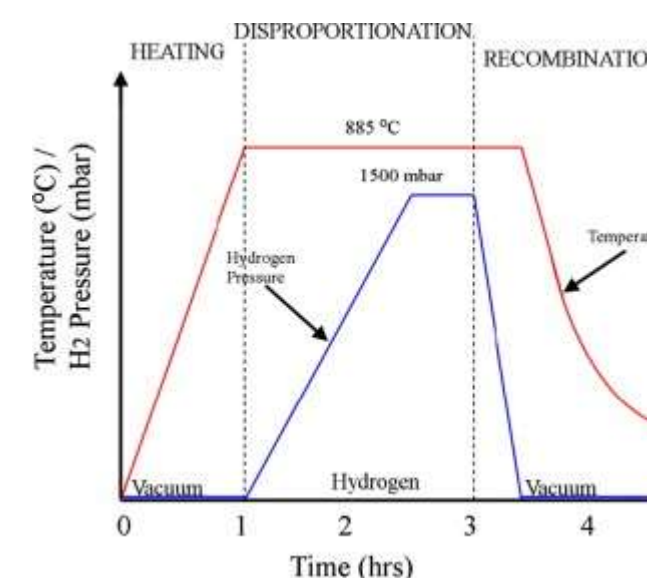


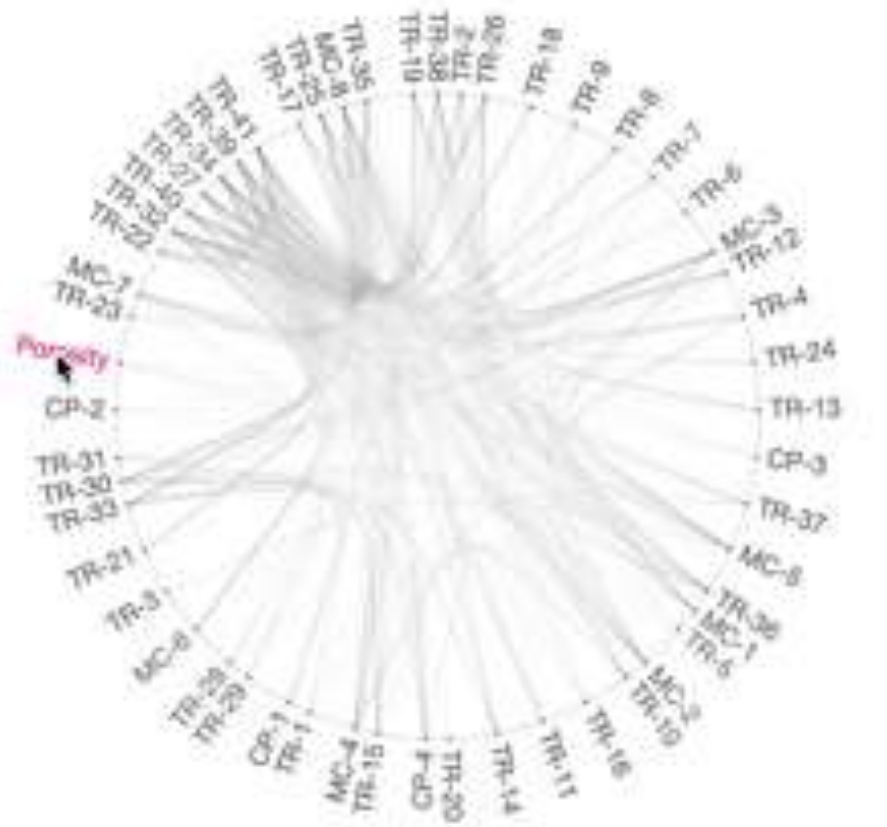
Lactic acid, $\text{CH}_3\text{CH}(\text{OH})\text{CO}_2\text{H}$

- PROCESSING CONDITIONS
- COMPOUND INFORMATION
- Calculated properties
- Ontologies
- Formulations
- Spectra
- Chemical Spaces
- WEATHER CONDITIONS



System: 9	Calculated geometries ^{b,c,d}	AIM Critical point properties ^e	ELF Basins	Digital Repository ^g
X-H, R-H charge=0, n=0	R-H: 1.093Å, σ^2 1.474Å, σ^2 , 1.505Å, σ^2 Select coords <input type="checkbox"/>	(AIM) $\rho(\text{H})_{\text{H}}=0.035$ $V(\text{H})_{\text{H}}=-0.370$	ELF	10042to-2494 10042to-2495 10042to-2524 10042to-2608
X-H, R-CN charge=0, n=0	R-H: 1.481Å, σ^2 , 1.466Å, σ^2 Select coords <input type="checkbox"/>			10042to-2499 10042to-2499
X-H, R-DOP charge=0, n=0	R-H: 1.587Å, σ^2 , 2.229Å, σ^2 , 1.101 Å ² Select coords/Vib <input type="checkbox"/>			10042to-2893 10042to-2899
X-H, R-H charge=1, n=0	R-H: 1.291Å, σ^2 , 2.783Å, σ^2 1.698Å, σ^2 , 1.215Å, σ^2 Select coords/Vib <input type="checkbox"/>	(AIM) $\rho(\text{H})_{\text{H}}=0.082$ $V(\text{H})_{\text{H}}=-0.787$	ELF	10042to-2473 10042to-2478 10042to-2525 10042to-2563 10042to-2687
X-H, R-CN charge=1, n=0	R-H: 1.285Å, σ^2 , 1.279Å, σ^2 Select coords <input type="checkbox"/>	(AIM) $\rho(\text{H})_{\text{H}}=0.082$ $V(\text{H})_{\text{H}}=-0.749$	ELF	10042to-2493 10042to-2470 10042to-2454
X-H, R-DOP charge=1, n=0	R-H: 1.309Å, σ^2 , 1.688Å, σ^2 , 1.218 Å ² V 258 cm ⁻¹ , 75 Å ² <input type="checkbox"/>			10042to-2584 10042to-2610
X-C, R-H charge=2, n=0	C-H: 1.286Å, σ^2 1.888Å, σ^2 , 1.196Å, σ^2 Select coords <input type="checkbox"/>	(AIM) $\rho(\text{H})_{\text{H}}=0.181$ $V(\text{H})_{\text{H}}=-0.811$	ELF	10042to-2472 10042to-2474 10042to-2526 10042to-2496
X-H, R-H charge=0, n=1	R-H: 1.348Å, σ^2 , 1.3552Å, σ^2 Select coords/Vib <input type="checkbox"/>	(AIM) $\rho(\text{H})_{\text{H}}=0.081$ $V(\text{H})_{\text{H}}=-0.554$	ELF	10042to-2499 10042to-2500 10042to-2499
X-H, R-H charge=2, n=0	R-H: 1.317Å, σ^2 , 1.295Å, σ^2 Select coords/Vib <input type="checkbox"/>	(AIM) $\rho(\text{H})_{\text{H}}=0.079$ $V(\text{H})_{\text{H}}=-0.420$	ELF	10042to-2504 10042to-2513 10042to-2504

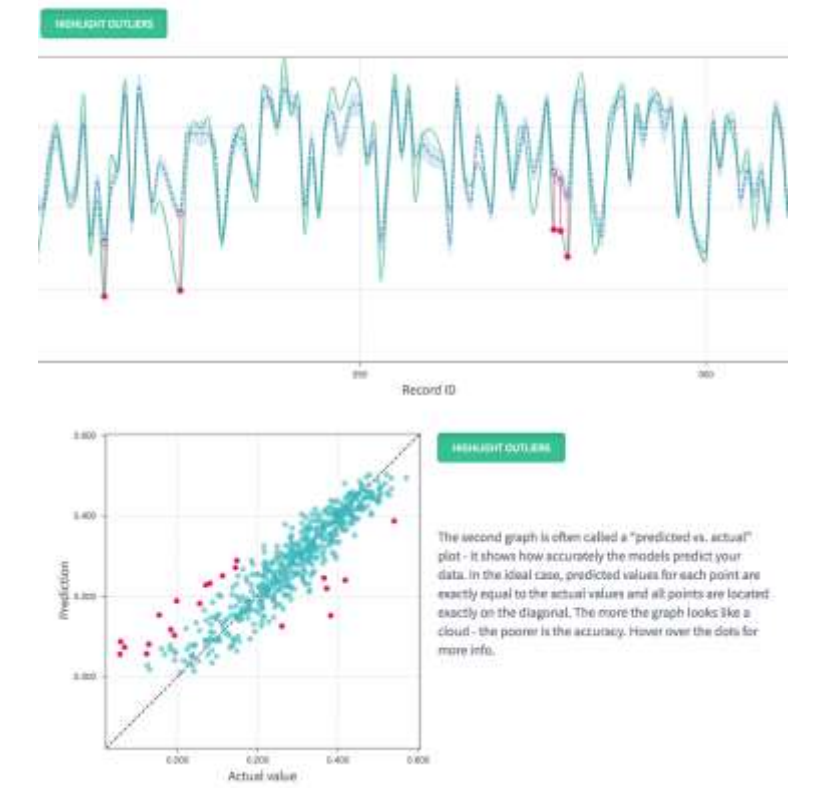




How is everything inter-connected?



From all inputs, which are the dominant ones?



What are the exceptions to the rule?



	A	B	C	D	E	F	G	H	I	J	K	L	M	N	O	P	Q	R	S	T	U	V	W	X
1	TR-1	TR-2	TR-3	TR-4	TR-5	TR-6	TR-7	TR-8	TR-9	TR-10	TR-11	TR-12	TR-13	TR-14	TR-15	TR-16	TR-17	TR-18	TR-19	TR-20	TR-21	TR-22	TR-23	TR-24
2	37,76826	0	10,72934	0	0	0	0	0	0	10,25688	0	0	0	4,102712	10,25428	0	15,76425	0	0	0	0	0	0	0
3	34,95269	0	0	9,174846	0	0	0	0	0	13,76054	0	0	0	0	15,82367	0	7,150036	0	0	0	7,738014	0	0	0
4	34,55571	0	0	0	8,750768	0	0	0	0	16,11571	0	0	0	0	13,09145	0	15,70946	0	0	4,029879	0	0	0	0
5	28,82497	0	0	7,635113	0	0	0	0	0	7,703272	0	0	0	35,38289	0	0	9,053304	0	0	3,706599	0	0	0	0
6	45,48735	0	0	0	5,725948	0	0	0	0	0	0	0	0	10,38714	5,767717	0	25,38208	0	0	0	0	0	0	0
7	20,3436	0	7,000182	0	0	0	0	0	0	27,55418	0	0	0	24,85957	11,73996	0	0	0	0	0	0	0	0	0
8	31,11202	0	5,220457	0	0	0	0	0	0	34,54729	0	0	0	0	14,63688	0	4,95252	0	0	0	0	0	0	0
9	32,37367	0	0	0	12,12199	0	0	0	0	11,27032	0	0	0	0	17,04875	0	0	0	0	5,883745	0	0	8,36291	0
10	21,08679	0	0	12,0013	0	0	0	0	0	39,11747	0	0	0	2,547448	16,09833	0	0	0	0	0	0	0	0	0
11	34,04005	0	0	9,913737	0	0	0	0	0	10,49266	0	0	0	0	12,77843	0	9,564582	0	0	1,822931	0	0	6,844697	0
12	36,87246	0	0	0	9,72228	0	0	0	0	0	0	0	0	0	11,65103	0	11,62069	0	0	0	11,75469	0	0	0
13	25,65631	0	13,09147	0	0	0	0	0	0	22,20215	0	0	0	4,224551	10,02183	0	0	0	0	0	11,2843	0	0	0
14	22,40442	0	8,783758	0	0	0	0	0	0	18,69243	0	0	0	33,04642	0	0	0	0	0	0	1,065661	0	0	0
15	34,90682	0	0	12,90205	0	0	0	0	0	7,474624	0	0	0	7,646666	0	0	4,598522	0	0	4,478193	8,636207	0	0	0
16	46,17838	0	0	8,227612	0	0	0	0	0	8,160793	0	0	0	0	4,116057	0	28,16221	0	0	0	0	0	0	0
17	43,4119	0	0	3,1644	0	0	0	0	0	0	0	0	0	0	0	0	29,1443	0	0	0	0	0	0	0
18	25,68776	0	0	0	13,32756	0	0	0	0	1,712921	0	0	0	40,98206	0	0	8,509068	0	0	2,264378	0	0	0	0
19	22,17325	0	0	0	15,51469	0	0	0	0	0	0	0	0	0	0	0	11,47414	0	0	36,63111	0	0	4,991637	0
20	44,54397	0	0	2,907071	0	0	0	0	0	3,53224	0	0	0	0,920674	29,78012	0	0	0	0	1,827625	1,919983	0	1,549249	0
21	47,52828	0	0	0	3,514452	0	0	0	0	0	0	0	0	0	0	0	10,74762	0	0	0	32,61489	0	0	0
22	32,83928	0	0	4,120787	0	0	0	0	0	0	0	0	0	8,571727	43,62387	0	2,653173	0	0	0	0	0	2,836825	0
23	43,98922	0	0	8,906335	0	0	0	0	0	1,80919	0	0	0	2,28944	0	0	3,211237	0	0	0	0	0	21,12522	0
24	44,62924	0	0	12,16238	0	0	0	0	0	0	0	0	0	0	1,366464	0	3,985396	0	0	15,2404	0	0	1,404263	0
25	35,54513	0	11,37611	0	0	0	0	0	0	0	0	0	0	4,709295	35,95016	0	0	0	0	1,819234	2,2117	0	2,104025	0
26	43,85994	0	7,674158	0	0	0	0	0	0	3,437808	0	0	0	2,73932	0	0	3,013572	0	0	0	0	0	26,35392	0
27	47,91409	0	3,122331	0	0	0	0	0	0	5,497414	0	0	0	2,203527	0	0	4,032631	0	0	0	0	0	31,92434	0
28	45,80616	0	0	6,82948	0	0	0	0	0	0	0	0	0	0	0	0	9,056673	0	0	25,54012	0	0	2,247993	0
29	43,13861	0	0	0	9,647631	0	0	0	0	0	0	0	0	0	2,058998	0	5,899411	0	0	0	0	0	24,93531	0
30	43,88031	0	4,496614	0	0	0	0	0	0	0	0	0	0	1,154935	0	0	6,648952	0	0	24,33565	0	0	3,210653	0
31	38,72733	0	13,00038	0	0	0	0	0	0	2,672408	0	0	0	1,83461	0	0	2,974023	0	0	0	0	0	20,92064	0
32	45,6319	0	3,118648	0	0	0	0	0	0	1,63725	0	0	0	1,885133	0	0	4,721086	0	0	0	0,988732	0	27,88977	0
33	42,9275	0	0	7,7325	0	0	0	0	0	0	0	0	0	0	0	0	27,5641	0	0	0	0	0	0	0
34	42,61154	0	0	0	10,5919	0	0	0	0	0	0	0	0	0	0	0	29,56291	0	0	0	0	0	0	0
35	47,1598	0	0	5,4685	0	0	0	0	0	0	0	0	0	0	0	0	21,0023	0	0	0	0	0	0	0
36	41,74313	0	0	9,770785	0	0	0	0	0	0	0	0	0	1,758895	0	0	5,565318	0	0	2,603289	33,21929	0	0	0
37	25,52258	0	15,04078	0	0	0	0	0	0	3,423076	0	0	0	38,16451	0	0	9,450287	0	0	0	0	0	0	0

NEXT STEPS

Training

DataStories Platform

Projects

Special Ops consulting

LET'S DO A